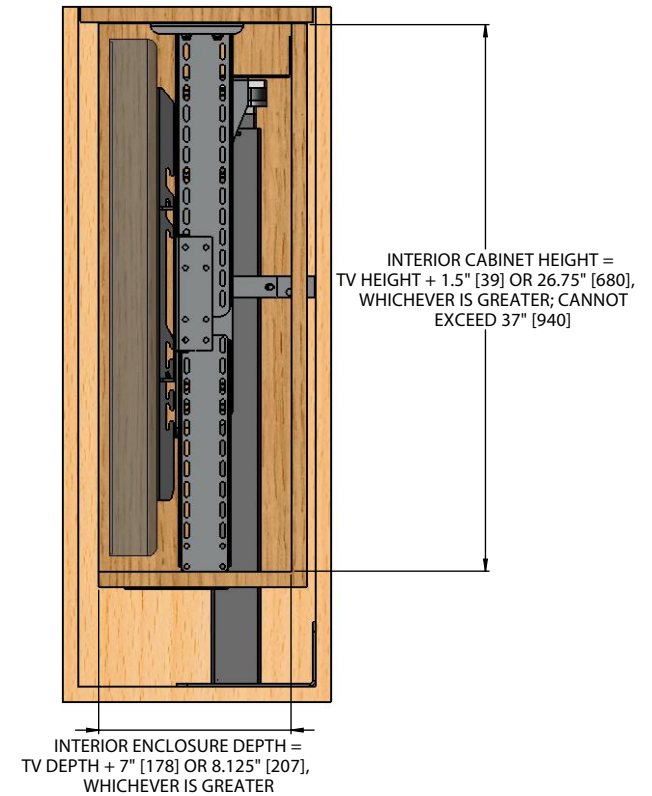
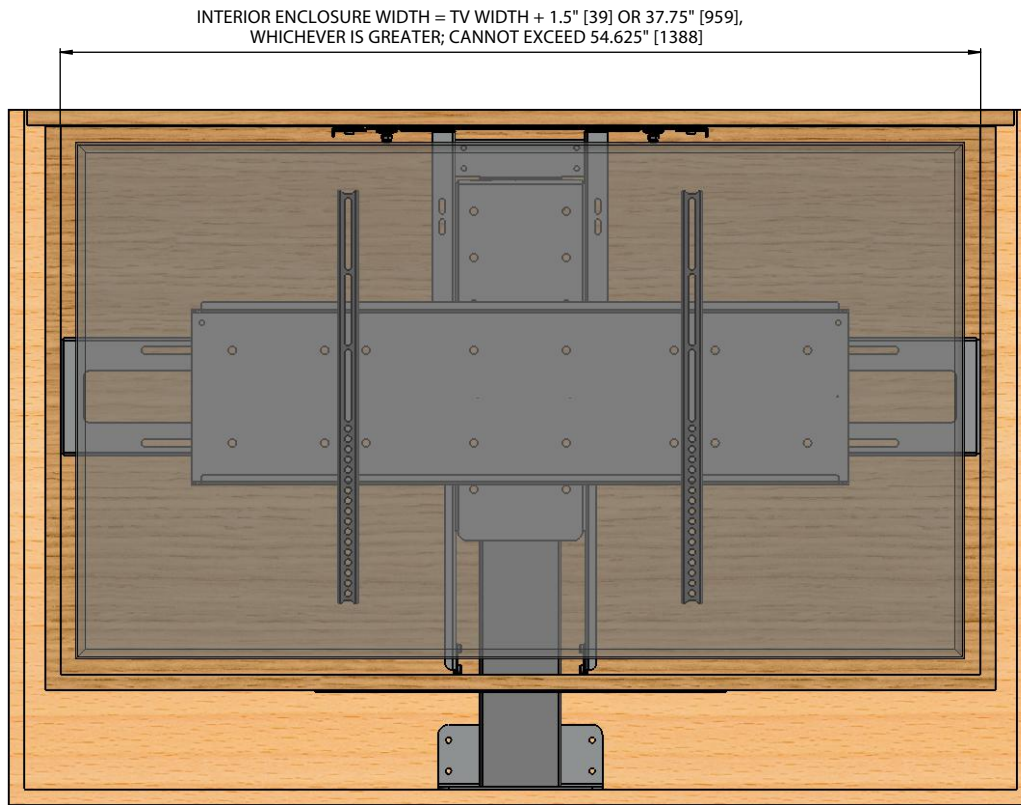


# MODEL L-50ens DIAGRAM PRIMARY ENCLOSURE DIMENSIONS



## NOTES:

1. THE CABINET BOX AND ENCLOSURE BOX SHOWN IN THE DIAGRAM IS FOR REFERENCE ONLY AND THEY ARE NOT PROVIDED WITH THE LIFT SYSTEM
2. FOR ENCLOSURE REFERENCE DIMENSIONS SEE PAGE 2 OF THIS DIAGRAM, FOR CABINET DIMENSIONS SEE PAGES 3 AND 4
3. DIMENSIONAL EQUATIONS SHOWN ON THIS PAGE OF THE DIAGRAM ARE TO BE USED WITH THE DIMENSIONAL EQUATIONS FOUND ON PAGE 3
4. ALL DIMENSIONS SHOWN IN INCHES WITH MILLIMETERS SHOWN IN [ ]
5. FOR THIS LIFT MODEL, THE LENGTH OF ITS TRAVEL [EXTENSION OF STROKE] IS 39.25" [998]
6. TO FULLY EXPOSE AND SWIVEL THE TV AND ENCLOSURE, INTERIOR ENCLOSURE HEIGHT + 2.125" + LID THICKNESS CANNOT EXCEED 39.25" [998]
7. FOR THIS LIFT MODEL, THE TOTAL WEIGHT CAPACITY IS 100 LBS [45 KG] (TV, ENCLOSURE BOX, AND LID)
8. HEIGHT OF THIS MODEL IS ADJUSTABLE IN 1/4" [7] INCREMENTS UP TO 12" [305] MINIMUM HEIGHT = 32.25" [724]; MAXIMUM HEIGHT = 40.5" [1029]
9. WHEN DETERMINING TV HEIGHT, ALWAYS USE MANUFACTURERS SUPPLIED 'TV WITHOUT STAND' HEIGHT
10. LIFT MECHANISM IS POWDERCOATED BLACK STEEL, COLORS IN DIAGRAM ARE FOR CLARITY ONLY

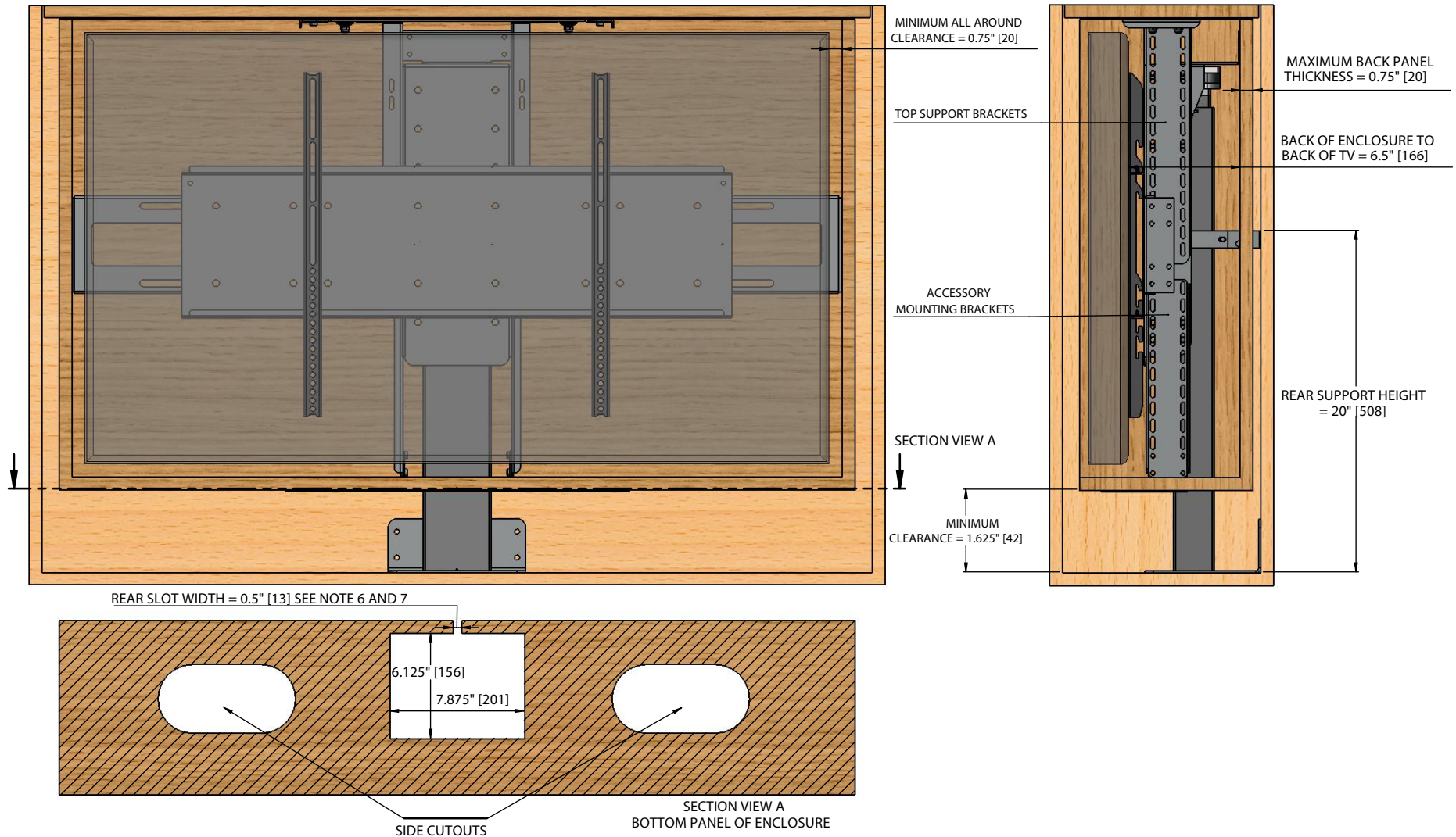
## QUICK REFERENCE DIMENSION GUIDE (1 of 2) (USE WHICHEVER IS GREATER)

TV DIMENSIONS: W \_\_\_\_\_, H \_\_\_\_\_, D \_\_\_\_\_  
 INTERIOR ENCLOSURE HEIGHT:  $H + 1.5" [39] =$  \_\_\_\_\_ OR 26.75" [680]  
 CANNOT EXCEED 37" [940]  
 INTERIOR ENCLOSURE WIDTH:  $W + 1.5" [39] =$  \_\_\_\_\_ OR 37.75" [959]  
 CANNOT EXCEED 54.625" [1388]  
 INTERIOR ENCLOSURE DEPTH:  $D + 7" [178] =$  \_\_\_\_\_ OR 8.125" [207]

# NEXUS 21

COPYRIGHT 2017 - ALL RIGHTS RESERVED  
 UPDATED 12/21/17

# MODEL L-50ens DIAGRAM ENCLOSURE REFERENCE DIMENSIONS



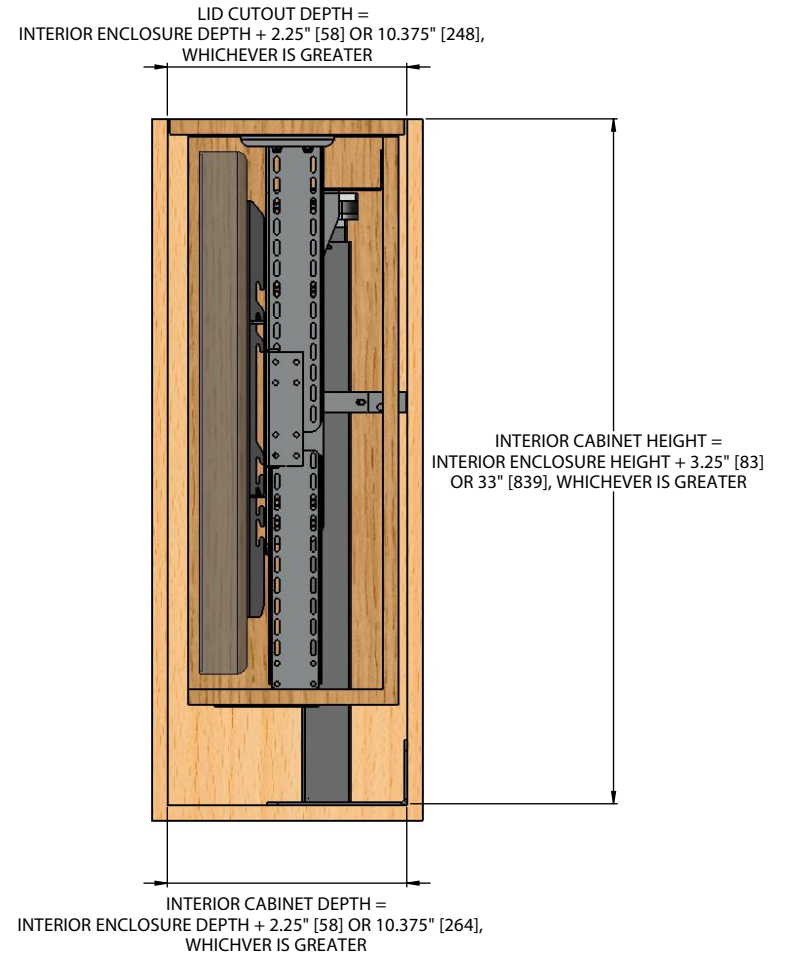
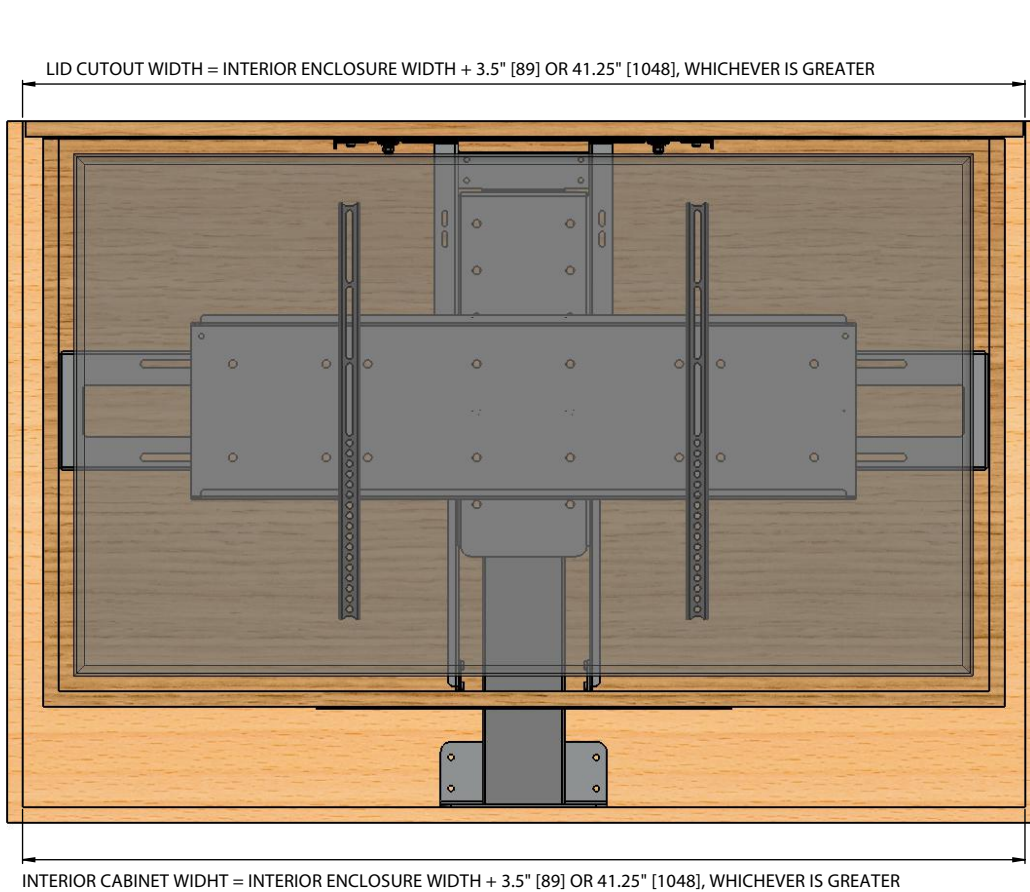
**NOTES:**

1. ALL PANEL THICKNESSES FOR THE ENCLOSURE CANNOT EXCEED 0.75"
2. TOP PANEL OF ENCLOSURE IS DESIGNED TO FLOAT USING PROVIDED TAPERED PINS AND CANNOT BE FASTENED TO THE LIFT
3. SECTION VIEW A REPRESENTS THE BOTTOM PANEL OF THE ENCLOSURE BOX
4. BOTTOM PANEL OF ENCLOSURE MUST HAVE A CENTER CUTOUT TO ACCOMMODATE LIFT COLUMN AND BRACKETRY
5. SIDE CUTOUTS RECOMMENDED FOR VENTILATION, CENTER CUTOUT RECOMMENDED FOR CABLE MANAGEMENT
6. A 0.5" WIDE REAR SLOT MUST BE CUT IN THE BACK PANEL OF THE ENCLOSURE TO ACCOMMODATE THE REAR SUPPORT BRACKET
7. THE REAR SLOT MUST BE HIGH ENOUGH ON BACK PANEL OF ENCLOSURE TO ACCOMMODATE THE REAR SUPPORT BRACKET
8. TOP SUPPORT BRACKETS ALLOW TOP PLATE TO BE ADJUSTED FLUSH WITH UNDERSIDE OF THE ENCLOSURE TOP PANEL
9. ACCESSORY MOUNTING BRACKETS ALLOW BOTTOM PLATE TO BE ADJUSTED FLUSH WITH UNDERSIDE OF ENCLOSURE BOTTOM PANEL

# NEXUS<sub>21</sub>

COPYRIGHT 2017 - ALL RIGHTS RESERVED  
UPDATED 12/21/17

# MODEL L-50ens DIAGRAM PRIMARY CABINET DIMENSIONS



QUICK REFERENCE DIMENSION GUIDE (2 of 2)  
(USE WHICHEVER IS GREATER)  
(INTERIOR ENCLOSURE DIMENSIONS FROM QUICK REFERENCE ON PAGE 1)

INTERIOR ENCLOSURE DIMENSIONS: W \_\_\_\_\_, H \_\_\_\_\_, D \_\_\_\_\_  
 INTERIOR CABINET HEIGHT:  $H + 3.25" [83] = \text{_____} \text{ OR } 33" [839]$   
 INTERIOR CABINET WIDTH:  $W + 3.5" [89] = \text{_____} \text{ OR } 41.25" [1048]$   
 INTERIOR CABINET DEPTH:  $D + 2.25" [58] = \text{_____} \text{ OR } 10.375" [264]$

**NOTES:**

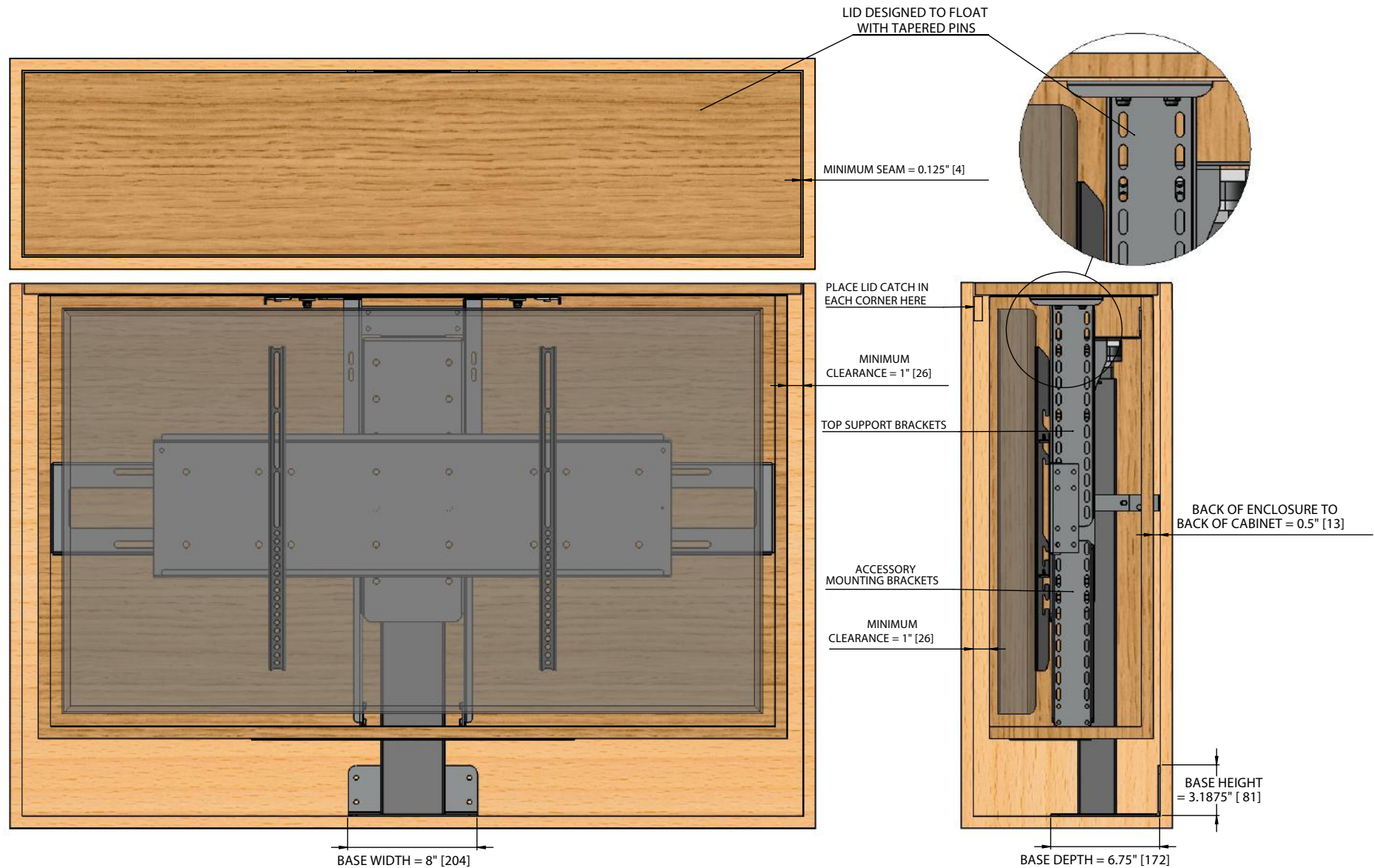
1. THE CABINET BOX AND ENCLOSURE BOX SHOWN IN THE DIAGRAM IS FOR REFERENCE ONLY AND THEY ARE NOT PROVIDED WITH THE LIFT SYSTEM
2. FOR CABINET REFERENCE DIMENSIONS SEE PAGE 4 OF THIS DIAGRAM, FOR ENCLOSURE DIMENSIONS SEE PAGES 1 AND 2
3. DIMENSIONAL EQUATIONS SHOWN ON THIS PAGE OF THE DIAGRAM ARE TO BE USED WITH THE DIMENSIONAL EQUATIONS FOUND ON PAGE 1
4. ALL DIMENSIONS SHOWN IN INCHES WITH MILLIMETERS SHOWN IN [ ]
5. INTERIOR CABINET EQUATIONS ARE BASED ON INTERIOR ENCLOSURE DIMENSIONS

# NEXUS<sub>21</sub>

COPYRIGHT 2017 - ALL RIGHTS RESERVED  
UPDATED 12/21/17



# MODEL L-50ens DIAGRAM CABINET REFERENCE DIMENSIONS



**NOTES:**

1. THE LID FOR THIS MODEL IS THE TOP PANEL OF THE ENCLOSURE AND MUST FLOAT USING THE PROVIDED TAPERED PINS
2. TAPERED PINS ALLOW LID TO FLOAT WITH THE USE OF LID CATCHES AND ALLOW THE LID TO SIT FLUSH AFTER THE LIFT RETRACTS
3. MINIMUM SEAM CAN BE REDUCED TO 0.0625" [2] WITH A 45 DEGREE BEVEL ON THE LID

# NEXUS<sub>21</sub>

COPYRIGHT 2017 - ALL RIGHTS RESERVED  
 UPDATED 12/21/17